

April 27, 2003
Printed on April 27, 2003
Preliminary draft. Comments welcome.

**Mass Secondary Schooling and the State:
The Role of State Compulsion in the High School Movement**

Claudia Goldin
Harvard University and the NBER
and
Lawrence F. Katz
Harvard University and the NBER

Presented at the AEA Meetings, Sunday, January 5, 2003, 10:45AM, session on “Educational Quantity and Quality: Historical and Recent Perspectives on Current Policy Issues.”

We gratefully acknowledge the financial support of the Spencer Foundation, Major Grant no. 200200007 on our book, *The Race between Education and Technology: Interrelationships between the Economy and Human Capital in U.S. History* (in progress) of which this is a small part. Adriana Lleras-Muney generously made available all the data from her work on compulsory schooling and child labor. Similarly, Joshua Angrist and Daron Acemoglu kindly provided their coding of the laws. Stefanie Schmidt did the same several years ago and also photocopied for us the complete set of sources she used. We thank them all.

Claudia Goldin
and
Lawrence F. Katz

*“Mass Secondary Schooling and the State:
The Role of State Compulsion in the High School Movement”*

ABSTRACT

In the three decades from 1910 to 1940, the fraction of U.S. youths enrolled in public and private secondary schools soared from 18 to 71 percent and the fraction graduating increased from 9 to 51 percent (considerably more in most northern and western states). What was the role of state compulsion in the great expansion of secondary schooling from 1910 to 1940? It would appear from the timing of the laws that compulsion mattered a great deal. The laws became more effective and would have constrained youths in the secondary school ages just as youths were entering and graduating from high schools in greater numbers.

Our first objective is to uncover the effect of state compulsory schooling and child labor laws from 1910 to 1939 using contemporaneous evidence on secondary school enrollments. We also use micro data from the 1960 Census of Population to examine the effects of these state laws on overall educational attainment of birth cohorts reaching high school age during the high school movement. Our estimation approach exploits cross-state differences in the timing of changes in state laws and controls for state fixed effects, birth cohort (or year) fixed effects, and other time-varying state level determinants of secondary schooling. We find that the expansion of state compulsory schooling and child labor laws from 1910 to 1939 had a statistically detectable positive impact on contemporaneous secondary school enrollments and on the adult educational attainment of the affected youth cohorts. But we also find that the estimated effects of these laws were modest at best especially in comparison with the large increase in high school enrollments and overall educational attainment over the period.

From 1910 to 1940 the fraction of youths enrolled in public and private U.S. secondary schools increased from 18 to 71 percent and the fraction graduating increased from 9 to 51 percent (see Figure 1).¹ As large as was the increase for the nation as a whole, that for states outside the South was considerably greater. The fraction graduating in most of the northern and western states increased from just above 10 percent to 60 percent and even higher in the Pacific states (see Figure 2 for U.S. regional data). Such increases are as large as any in the recent history of nations undergoing mass secondary schooling. South Korea, for example, underwent an extremely rapid increase in the education of its citizens from around 1954 to 1984 when the fraction graduating from upper secondary school increased from 25 percent to 88 percent.²

An important difference between the experience of the United States in mass secondary schooling from 1910 to 1940 and that of other countries in the post-World War II era is the role played by government, especially the central government. In most other nations, such as South Korea and Great Britain, the central or federal government largely coordinated the transformation. In the United States, it did not.³

The U.S. educational bureaucracy was, and largely is, decentralized, diffuse, and diverse. The federal government is a relatively minor player in K-12 education, and within each of the states the various school districts have had considerable freedom regarding regulations, taxes, and expenditures.⁴ School districts, moreover, are exceptionally numerous. Today there are about 15,000 school districts. But in 1932, when the federal government first made a count of the nation's school districts, they numbered almost 130,000. Although the great majority were

¹ Secondary schools include the preparatory divisions of colleges and universities. See Goldin (1994, 1998) for a description of the secondary school enrollment and graduation data for the entire United States and the separate states and regions.

² The increase for males was from 41 to 90 percent, but that for females was 10 to 86 percent. See OECD (1998), tables A1-2a and A1-2b. The figures are for individuals in two age groups in 1996: 55 to 64 years old and 25 to 34 years old. If graduation occurred around 18 years old, these data would approximately refer to the years from 1954 to 1984.

³ In the case of South Korea, for example, a U.S.-style educational system was imposed in 1949. Schooling was of the 6-3-3 variety, with six-year elementary schools, three-year middle schools, and three-year senior high schools. Compulsory education in Korea was just six years until 1969 when it was expanded to nine years. In Britain compulsory schooling laws are frequently given credit for increasing secondary school attendance, in part because the most important of them, the Education Act of 1944, was accompanied by an extension of public funding to provide broader access to some form of free secondary schooling (Ringer 1979). The historic 1944 Education Act increased the age of compulsory education (the school leaving age) in England, Scotland and Wales from 14 to 15 in 1947 and appears to have been rigorously enforced. The fraction of those leaving school at age 14 declined from 57 percent in 1945 to less than 10 percent in 1948 (Oreopoulos 2003). Although the Education Act of 1936 intended to raise the schooling leaving age from 14 to 15 in 1939, World War II delayed the operation of the Act. More important, perhaps, was that secondary education became fully funded after 1944 whereas it had been on a tuition basis making rather inaccessible to students from families with modest means except for a small share of such students awarded merit scholarships.

⁴ The fraction of total K-12 revenues accounted for by the federal government has never exceeded 10 percent in any year. In the 1920s less than 0.5 percent of total revenue came from the federal government. With the passage of the National Defense Education Act of 1964, the federal role increased from 4.4 to 7.9 percent. Although it increased again in the late 1970s, it has subsequently decreased. See U.S. Department of Education (1993, table 21).

tiny common school districts of the “open country,” about 20 percent contained a high school.⁵ Despite the large number of school districts in the United States and the absence of strong federal control, the “state” (and here we mean the various states) did mandate and coordinate various details concerning secondary school education.

Early in the period of the high school movement various states required (through “free tuition” laws) that every district provide for the public high school education of its citizens, just as states in the nineteenth century had required that all districts provide a common school education. States coordinated secondary education across the various districts by setting standards for what constituted a high school, which credentials were required of high school teachers, and what performance was required for grade advancement and high school graduation. Each of these laws and regulations compelled districts to take a particular action. Some states passed legislation compelling the state university to accept the state’s high school graduates without further preparation.

States were also involved in a host of ways that effectively decreased the supply price of secondary schooling to certain individuals and districts. Some states gave grants to poorer districts for teacher salaries, high school buildings, textbooks, and transportation. States often offered financial incentives for the consolidation of districts to increase the scale of secondary schools and for high school buildings. But of all the ways in which state legislation might have advanced secondary schooling, compulsory education and child labor laws have received the most attention.

Compulsory education and child labor laws were first passed in the United States in the mid-nineteenth century (Massachusetts, in 1852, was the earliest state with a compulsory schooling law). By 1890 27 states (out of the 48 that would eventually exist by 1912) had already passed a compulsory schooling law and in 1918, with the passage of a law by Mississippi, all 48 states (plus the territories of Hawaii and Puerto Rico, and the District of Columbia) had such a law.⁶

But it was not until the early twentieth century that compulsory education and child labor laws could have had a direct impact on secondary schooling. The ages that the laws were intended to constrain, the bureaucracy allotted to enforce them, and the coordination of the education and labor portions of the laws changed in the early twentieth century and gave the laws new bite to constrain the behavior of youth of secondary school age.

The federal government was effectively removed from legislating against child labor until 1938. The Supreme Court ruled unfavorably on two federal child labor acts—the Keating-Owen Child Labor Bill of 1916, which it struck down in 1918, and the Child Labor Tax Law of 1918, which was to replace Keating-Owen but which was similarly struck down in 1922.⁷ The

⁵ The Office of Education also reported in 1932 that there were 26,409 public secondary schools. At most, therefore, 21 percent of all school districts had a public secondary school whereas the rest contained only elementary or common schools.

⁶ For a timeline of compulsory education laws see, for example, Steinhilber and Sokolowski (1966).

⁷ The ages covered by federal legislation before 1938 were those to 14 years. The Keating-Owen Bill, for example, prohibited the interstate commerce of the products of children under 14 years and those of older

child labor constitutional amendment failed to be ratified by the states in 1925. Not until the National Industrial Recovery Act (passed in 1933 but declared unconstitutional in 1935) and later the Fair Labor Standards Act (1938), upheld by the Supreme Court in 1941, did the federal government have a role in legislating against child labor. The states, in the meantime, were quite active.

What was the role of state compulsion in the expansion of secondary schooling from 1910 to 1940? It would appear from the timing of the laws and the high school movement that compulsion could have mattered a great deal. The laws became more effective and constrained youths in the secondary school ages just as youths were entering and graduating from high schools in greater numbers. This coincidence has led many to assert that the law changes spurred the increase in high school enrollments.⁸

In previous work we explored the reasons for the expansion of secondary school enrollment and graduation using a simple supply-demand framework for a quasi-public good.⁹ We found, using repeated cross-sections and panel data on states in reduced-form models, that high school graduation and enrollment rates increased with income or wealth per capita, decreased with greater opportunities for youthful employment, and increased with greater homogeneity of community and lower inequality of income. We relied on the findings of other researchers to support our sense that changes in compulsory schooling and child labor laws could not account for anything more than a relatively small fraction of the increase in enrollments and graduation rates. The studies on which we have relied (including Acemoglu and Angrist 2000; Schmidt 1996; and Lleras-Muney 2002) used micro-data from the U.S. census data to explore the effects of compulsory schooling and child labor laws in effect in the state of birth of native-born adults when these adults would have been constrained by the laws (at age 14).

Our first objective is to uncover the effect of state compulsory schooling and child labor laws from 1910 to 1939 on secondary schooling using contemporaneous evidence on secondary school enrollments that we compiled for our work on the high school movement. In a similar

children in specific industries. An excellent source for primary materials on the history of child labor in the United States is: <http://www.boondocksnet.com/labor/>

⁸ David Tyack, for example, in his widely cited volume *The One Best System* states: “Attendance in high schools increased [from 1890 to 1918] ... The curve of secondary school enrollment and graduation continued to soar: in 1920, 61.6 percent of those fourteen to seventeen were enrolled ... in 1930, the [figure was] 73.1 percent ... As these statistics suggest, during the first two decades of the twentieth century compulsory schooling laws were increasingly effective” (Tyack 1974, p. 183). Selwyn Troen, in his well-received history of the St. Louis public school system, presents a table giving the fraction of youths at various ages who attended school at some time during the census year. The fractions attending in the 7 to 13 year range increased from 1880 to 1910, 1910 to 1920, and again from 1920 to 1930 (although Troen reports that all fractions in 1930 are 97.7 percent!). He concludes: “As Table 12 demonstrates, the legislation was very effective. Due to vigorous enforcement, nearly all children were in school continuously from age six or seven until fourteen by the 1910s” (Troen 1976, p. 202). Because Troen uses decennial census data, his evidence does not necessarily indicate that children were at school “continuously” in the ages considered. Each could have attended school for just one day. The point, however, is simply that many fine historians accord compulsory schooling and child labor laws an enormous role in the large increase of school enrollment and attendance during the Progressive Era.

⁹ See, for example, Goldin and Katz (1999; 2003, forthcoming).

manner to others who have addressed this question, we also estimate the impact of the laws on the overall educational attainment of birth cohorts reaching high school age during the high school movement using micro data from the 1960 Census of Population. But we use corrected information on the laws and somewhat different (and we believe more accurate) coding of the law variables to emphasize the features of compulsory attendance and child labor laws most likely to constrain youth school attendance choices. Our estimation approach exploits cross-state differences in the timing of changes in state laws and controls for state fixed effects, birth cohort (or year) fixed effects, and other time-varying state level determinants of secondary schooling. We find that changes in state compulsory schooling and child labor laws from 1910 to 1939 had a detectable positive impact on schooling but that it was modest at best especially in comparison with the increase in high school enrollments and overall educational attainment over the period. The possible endogeneity of law changes to other (unmeasured) underlying determinants of increased schooling suggest our approach is likely to overestimate the “causal” impacts of law changes. Nevertheless, it is always possible that enforcement increased even when the laws did not change and that there is more room in the history of education for the “state.”

Compulsory Schooling and Child Labor Laws

What were the laws?

The typical compulsory schooling law set down the ages during which youths had to be in school. That is, the typical law included a minimum age and a maximum age. In the early twentieth century when maximum ages increased in many states, the typical law began to set down a level of school that would exempt the youth from the maximum age of compulsory schooling. The grade needed for exemption, not the maximum age, was the binding constraint of the compulsory schooling law in most states. But that was not always the case, particularly for foreign-born children who could not meet the grade standard before reaching the maximum age. Almost all laws included exemptions for those with mental or physical impairments and some exempted youths with impoverished parents or who lived a distance from the closest school.

Child labor laws modified the compulsory schooling laws in various ways. They generally exempted youths constrained by the compulsory schooling law so they could work. They set down the method by which youths could obtain a work permit and they often contained a minimum level of schooling required to do so. The minimum was almost always lower than the level of schooling that would exempt the child from school. Youths who worked at home and in agriculture were freed from many of the usual constraints concerning work permits.

When the two laws were judged together, as they generally were by the authorities, the child labor law was almost always the binding constraint, not the maximum age of compulsory schooling or the educational requirement for exemption. Another important change in the early twentieth century was the better articulation of the two laws and of the inclusion of the child labor laws in the compulsory schooling legislation in some states.

Another important change in these laws during the Progressive Era was the addition of statutes mandating or enabling continuation (also known as part-time) schools. These schools

were established to educate the youth who had left school to work but was still below the maximum age of compulsory schooling.¹⁰ The legislation typically required that youths attend the school for four to eight hours per week and that these hours extend during the usual workday. The schools were to be established in municipalities having a sufficient number of school-aged youths (often more than 20) with work permits. These laws increased the cost to employers of hiring such youths since they would have to be excused from work during part of an afternoon each week or up to an entire day.¹¹

The child labor portion of the laws generally contained more complex provisions than did the portions dealing with compulsory schooling. They often listed occupations that youths could not enter and the times they could not be employed. Child labor laws had complicated procedures to ensure compliance. For example, children who wanted to obtain a work permit had to find employment, have their prospective employer fill out a form, prove that they were above some required age, and be certified by a physician to be healthy. Their work permit remained with their employer who was to surrender it when the youth left voluntarily or was fired.¹²

Some writers have interpreted the compulsory education and child labor laws as being inconsistent because the binding constraint was often the child labor law rather than the age of compulsory education or the education required for exemption. But the laws were not in conflict. In fact, the laws were often sections of the same legislation.¹³

Child labor and compulsory education laws were, in large measure, consistently written and were designed to ensure that youths were not idle. Consider the modal law in the 1920s. It had a minimum age of 7 years, a maximum age of 16 years, an educational standard for exemption of 8 years of school, and a work permit age of 14 years, as long as the youth had completed 6 years of school. The youth who dropped out of school at 14 years and had finished just 6 years of school would be a truant unless he had a job (and a work permit). In order to avoid both school and work, a youth would have to have completed 8 years of school, making him 15 years old (assuming that such a youth was advanced a grade during each year of school). Compulsory schooling and child labor acts were anti-truancy and anti-vagrancy laws rather than strongly pro-active education laws. The laws were, nevertheless, “pro-child” and made their employment more costly through limitations on their hours, industries, and occupations.

¹⁰ Continuation schools often gave a combination of academic and vocational courses.

¹¹ Emmons (1926, p. 134) contains a summary of the required attendance each week in continuation schools. Of the 23 states having a mandatory continuation school law in 1925, eight required up to 8-hours per week, nine required 4-hours, and six were at the 5- or 6-hours level.

¹² Bermejo (1923) has a step-by-step description of how youths could have obtained employment status in states with effective child labor laws.

¹³ See, for example, Stambler (1968) and numerous contemporaneous studies, often by advocates, including Clapp and Strong (1928) on Massachusetts and Gibbons (1927) on Indiana. In California, for example, the 1931 general laws of the states included Act 7519 (“school code”), which contained separate articles on compulsory education and on work permits. Other states had separate laws passed by the legislature often at separate times. One reason for the greater connection in some states is that the superintendent of schools was responsible for issuing work permit to certain minors.

Specific aspects of the laws from 1910 to 1939

We have compiled information on seven aspects of these laws for all states for each year between 1910 and 1939 (see Data Appendix). The variables are:

1. Minimum age of compulsory schooling, known as the school entrance age (also compiled for 1902 to 1909);
2. Maximum age of compulsory schooling (also compiled for 1902 to 1909);
3. Education for exemption from maximum age rule;
4. Age at which youth can obtain a work permit (for work during normal school hours);
5. Education required to receive a work permit (for work during normal school hours);
6. Whether state has mandatory continuation schools; and
7. Maximum age of continuation school attendance (state permits municipalities to establish continuation schools).

These details of the laws do not exhaust the possible group of variables pertaining to child labor and compulsory schooling laws. They are, however, the most important and are those that can be obtained for most of the years.¹⁴

Figure 3 contains graphical depictions of the seven legal variables. The maximum age (2) continued to increase to around 1930 when 42 states set their maximum age at 14 years or higher. The minimum age (1), on the other hand, decreased throughout the period.¹⁵ At the start of the years shown, six-tenths of the states with compulsory schooling laws had a minimum age of entry set at 8 or more years. At the end of the period, however, almost three-quarters had a minimum age of 7 or fewer years. The minimum age of entry served to constrain school districts to provide classrooms and teachers for youngsters and may have enabled teenagers to accumulate an additional year or two of school before they exited from the system often around puberty.

The schooling required to be exempt from the maximum age of compulsory education (3) is somewhat complicated because it had to be consistent with the maximum age. At the start of the period, for example, 31 or almost two-thirds of the states did not have such a provision in their laws and only 13 states required 8 years or more for the exemption. By 1925 only six states did not have such a provision and 35 states required 8 years or more. The change was less important than might appear because the maximum age of compulsory education in most of the states that had an 8-year exemption had increased to 16 years.

The age at which youths could get a work permit (4) contains two periods of change: around the First World War and after 1935. The eight states that did not have work permit regulations in 1910 adopted them from 1915 to early 1920s and by 1925 all states had at least a 14-year old rule for work permits. The slow early movement to later ages for work permits

¹⁴ Other variables of importance are: excluded occupations and industries, restrictions on hours of work for minors, exemptions for other factors and court interpretations of them, the state (or municipal) apparatus for enforcing the laws (e.g., number of attendance officers, quality of the school census).

¹⁵ In our estimation of the impact of the laws on school enrollment, graduation, and educational attainment we use minimum ages to 1902 because a youth who was 14 years old in 1914, for example, would have, most likely, entered school in 1908 if the minimum age of school entry were 8. We have graphed the minimum part of the law using the same axes as for the maximum.

rapidly changed around 1935 with 11 states increasing the age to 16 years. Complementing the work permit age is the education required to obtain the permit (5). Sometimes expressed in years and other times as a grade, it increased primarily in the 1920s. By 1930 18 states had a requirement of eighth grade (or 8 years) and 31 had at least a sixth grade (or 6 year) requirement. But seven states still had no requirement in 1930 and seven others had only a basic literacy requirement. In 1939 ten states still had no requirement or simple literacy.

The final two variables (6 & 7) depicted concern continuation or part-time school. Continuation schools—generally housed within the community’s public high school—were intended to educate the youth who had exited the system to work before the maximum age of compulsory schooling or in some cases the legal age of majority. These schools were similar to other types of continuing education schools, such as night, adult, and vocational schools, but they differed in requiring the youth to attend school during the usual workday. In this respect, mandating attendance at these schools increased the cost to an employer of hiring a youth below the maximum age of compulsory schooling. Wisconsin, the home of the Progressive Party’s Robert LaFollette, was the first state to approve mandatory continuation schools. As is obvious in Figure 3 (6 & 7), the vast majority of states joined the continuation school bandwagon during or directly following the First World War.¹⁶ By 1921 21 states had mandatory continuation school attendance and an additional four states allowed municipalities to establish compulsory attendance at continuation schools.

The Impact of Compulsory Schooling and Child Labor Laws on Schooling and Educational Attainment

Previous findings and empirical strategies

Our work is most closely related to that of Lleras-Muney (2002) and Schmidt (1996), both of whom link the eventual schooling of individuals to the laws that existed in their state of birth when they were 14 years old. Both authors exploit the complexity of the laws and focus on the 1915 to 1939 period.¹⁷ Lleras-Muney uses the 1960 U.S. census micro-data files to estimate the impact of the laws on educational attainment, whereas Schmidt uses the 1940 census. Acemoglu and Angrist (2000) also estimate the impact of the laws using fewer features of the laws, but expanding the time period to cover youth cohorts educated through the 1960s.

¹⁶ In Britain, which had long had various types of continuation schools, the Education Act 1918 (known as the Fisher Act) and the Education Act 1921 mandated part-time attendance at continuation schools by those who left school between ages 14 and 18. See <http://catalogue.pro.gov.uk/Leaflets/ri2131.htm>.

¹⁷ Margo and Finegan’s (1996) study of compulsory education laws using the 1900 census micro-data files and a methodology similar to that in Angrist and Krueger (1991) also uses the complexity of the laws to uncover why youths in certain states were more constrained by compulsory schooling laws. They find that the combination of child labor laws with compulsory education laws made the latter more effective. See also Eisenberg (1988) on the complexity of nineteenth century compulsory schooling laws. Other previous studies of the effects of compulsory schooling laws in the United States include Landes and Solmon (1972), who explored the impact of late nineteenth century compulsory schooling laws using state cross-section differences and decadal changes for the 1870 to 1890 period, and Edwards (1978) who examined the impact of compulsory schooling laws on enrollment from 1940 to 1960.

These and other studies of compulsory schooling laws in the United States find impacts on educational attainment that are positive but modest at best and small in comparison with the change in attainment during the period. There are some differences among the findings in terms of the aspects of the laws that matter. Lleras-Muney, for example, finds that the implied years of schooling (the difference between the work permit age and the minimum compulsory schooling or school entry age) matters and that more stringent legal constraints reduce educational inequality in the affected cohorts. Relative to the change in educational attainment over the period, however, the effects are small.

All three studies, as well as ours, use an empirical strategy that includes state and cohort fixed effects, thereby taking out main levels and trends and thus identifying the effect of the laws off changes within states. The identification strategy has virtues, but also has some drawbacks.

The strategy will absorb factors that are common shocks to all states in the cohort effects. For example, the reduction in the employment of the agricultural and domestic service sectors and in industrial homework would have strengthened the impact of compulsory schooling laws by reducing employment in uncovered sectors and in workplaces that had costly surveillance. Furthermore, changes in enforcement, not changes in the laws, may have mattered, and we (as well as the others mentioned) have not yet obtained a variable that captures enforcement for all states during the period of interest.¹⁸

Although we have not yet circumvented the problems just mentioned, we can sidestep several others. By linking individuals to their state of birth, geographic mobility will produce attenuation bias. Similarly, the use of the linkage to state of birth means that the foreign born must be excluded, although their children can be included.

Our more novel contribution to this literature is to analyze the effects of the state laws using contemporaneous data on secondary school enrollments that we have collected for our study of the high school movement.¹⁹ By doing so, we do not have to restrict the analysis to the native born and we do not have to rely on matching individuals to their state of birth.²⁰ The contemporaneous data include enrollments in grades 9 to 12 at public and private schools, including the preparatory divisions of colleges and universities and grade 9 in public junior high schools.

Another contribution is that we have compared several independent compilations of the laws including our own, reconciled differences, and corrected errors.²¹ We have, in addition, extended all aspects of the laws back to 1910 and the minimum age back to 1902. We did the latter to correct the definition of one of the variables of interest in most of the studies—the difference between the age at which a youth could obtain a work permit and the minimum age of

¹⁸ On the impact of enforcement of compulsory schooling laws in New York State, see Schmidt (1996).

¹⁹ See Goldin (1994, 1998) for example. The public school data are drawn from the annual reports from 1910 to 1918 and then from the biennial reports of the Office of Education, but the coverage in the early period is incomplete and the data set can best be described as being biennial.

²⁰ With the exception of Schmidt's (1996) work on New York State, we do not know of any other study of compulsory schooling that has used contemporaneous data on high school enrollments.

²¹ See Data Appendix.

compulsory education. The minimum age should reflect the laws in existence about 8 years prior to when the youth could drop out of school to work, although previous studies mistakenly used the same year for both laws. Because of our changes to the laws and the definitions of some variables, we have also re-estimated the effects of the laws on educational attainment using 1960 micro-level census data.

Compliance and constraints, 1910 and 1920

Before we examine the effects of compulsory schooling and child labor laws, it is useful to ask what fraction of youths would have been constrained by the laws and what fraction were in compliance with existing laws. We can address these questions for 1910 and 1920 using the micro-level data of the U.S. population censuses.

Both the 1910 and 1920 censuses requested information on school attendance by individuals for any length of time during the preceding year. Individuals could, in addition, list an occupation. We define “full-time” school attendance as attending school but not listing an occupation and “part-time” attendance as attending school and listing an occupation. The information in the census does not reveal when the youth worked. It is impossible to determine if it was during the summer, after school hours, or during vacation, all of which would have been legal even within the constrained years, or whether the youth attended school at the start of the school year and then dropped out to take a job. For the older youths we give the results both ways.

Table 1 contains the fractions of youth attending school at various ages arrayed by the ages given by the laws existing in their current state of residence. We examine two laws: the minimum compulsory schooling age (part A) and the age at which a youth could obtain a work permit (part B). We also give the number of states that fall into each category.

With respect to compliance in states having a minimum age of 7 and 8 years, more than 85 percent of children attended some school at those ages and a somewhat greater fraction did in 1920 than in 1910. The fraction of children in a state who attended school in 1910 and 1920 was rarely above 95 percent and younger children could have been exempt because of distance to the closest school. There appears to have been compliance, by and large.

The fraction who would have been constrained had the law been more stringent is relatively low for states with a minimum age of 8. In 1910 the fraction attending school at age 7 in states with a minimum age of 8 was just 9 percentage points lower than it was at age 8. In 1920 it was just 6 percentage points lower.

In both 1910 and 1920 the vast majority of states granted work permits to 14 year olds. In both years the fraction of youth who attended school at all (“full-time” plus “part-time” attendance) was extremely high. Decreased attendance between ages 13 and 14 was about 7 percentage points. Put differently, about 7 percent of all youths who attended school at age 13 dropped out by age 14. The effect is somewhat greater using the “full-time” definition of school attendance and about 10 to 13 percent of 13 year olds dropped out by age 14.

Although these data afford only a rough sense of compliance, they appear to indicate that the vast majority of youth were in compliance. Furthermore, a large fraction of youths in the unconstrained ages were already attending school. Changes in the laws could still have made a difference, but the effects could not have been as large as they were in countries, like Great Britain, where youths in the unconstrained ages were largely not attending school at all.

Effects of law changes using contemporaneous evidence on enrollment

We examine the effects of state child labor and compulsory schooling laws on contemporaneous high school enrollment during the period of the high school movement using data on public and private enrollments in grades 9 to 12 (divided by the number of 14 to 17 year olds in the state) for even numbered years from 1910 to 1938.²² A standard panel data model is estimated including state and year fixed effects, state law variables, and other state time-varying economic and demographic control variables. The state fixed effects capture unmeasured time-invariant state characteristics that could have affected the adoption of schooling laws and enrollment rates. The year effects capture aggregate trends driving high school enrollment rates. Thus, our identification of the effects of state child labor and compulsory schooling laws is driven by differential law changes across states conditional on a range of time varying state controls.

Our regression specifications are of the form

$$ENR_{st} = L_{st}\delta + Z_{st}\beta + \alpha_s + \gamma_t + \varepsilon_{st} ,$$

where ENR_{st} is the high school enrollment rate for state s in year t , L_{st} is a vector state child labor and compulsory schooling law variables, Z_{st} is a vector of state time-varying covariates, α_s are state fixed effects, and γ_t are year fixed effects. The state control variables include those found by Goldin and Katz (1999, 2003) to have substantial effects on high school enrollment and graduation rates during the time period considered here. We include basic demographic controls for age structure (fraction young, fraction old), nativity (fraction foreign born), and race (fraction black). We also include several time varying economic controls: automobile registrations per capita and manufacturing employment per capita. Automobile registrations per capita, in this early period in the history of the car, represent a crude proxy for state wealth (or income) and their distributions. The variable is a measure of the “middle class” share of the state population after conditioning on state demographics and urbanization. We include, as well, a full set of census division linear time trends in our basic specification, and we assess the sensitivity of our results to the inclusion of state-specific linear time trends. We report robust standard errors clustered by state to account for serial correlation in the residuals as suggested by Bertrand,

²² Goldin (1994, 1998) constructs state public and private secondary school enrollment rates for 1910, 1911, 1913, and all even years from 1914 to 1950. We have imputed the rates for 1912 as the average of 1911 and 1913. See Goldin (1994, 1998) on the construction of the data.

Duflo, and Mullainathan (2002) and Kézdi (2001). All regressions are weighted by the contemporaneous number of 14 year olds in the state.²³

Regression estimates for different specifications of the state child labor and compulsory schooling law variables affecting high school age youth are presented in Table 2. The national high school enrollment rate (for the 48 states in the sample) increased by more than 50 percentage points during the sample period, rising from 18.7 percent in 1910 to 69.1 percent in 1938. In all the specifications, we include a dummy variable for a “permissible” state continuation school law, meaning one that mandated that municipalities establish continuation schools or permitted them to do so. Both laws set a maximum age below which working youths, who were below some educational standard, could be required to attend. The number of states with “permissible” continuation school laws increased from 2 in 1910 to 28 in 1938. The share of the high school age population covered by continuation school laws increased from 9 percent to 69 percent from 1910 to 1938.

The first column of Table 2 follows Lleras-Muney (2002) who summarizes the effects of the laws in a variable defined as the number of years a child would be forced to attend school if he entered school at the compulsory school entry age and left at the age he could obtain a work permit. Since youths of secondary school age would have been affected by age of entry laws when they were about 7 or 8 years old, we construct the variable in a slightly different manner and use the difference in the current work permit age and the school entry age prevailing in their state 8 years before. The variable ranges from 0 to 10 years with a sample mean of 6.07 years; the most stringent school attendance requirement in 1910 using this definition was 7 years and 14 states required 8 or more years by 1938. We also allow for discrete (nonlinear) effects of the introduction of child labor and compulsory schooling laws by including dummy variables indicating no child labor law or no compulsory schooling attendance age.

The estimates in column (1) of Table 2 show modest (and statistically significant) positive effects of both the continuation school law indicator and of the variable that summarizes the work permit age and the entry age. The adoption of a continuation school law is associated with slightly more than a 2-percentage point increase in the high school enrollment rate. An increase of a year in the summary variable of child labor laws raises the high school enrollment rate by around 1 percentage point.²⁴

The summary variable of the laws that we just defined (work permit age – entry age) does not account for other potentially important constraints that were part of the state child labor and compulsory school laws. Many state laws mandated a minimum amount of schooling, in addition to the age requirement, to receive a work permit. In some cases the mandated number of years was greater than the difference between the work permit age and the age of school entry.

²³ The regression results are not sensitive to weighting. In all cases, unweighted regressions yield estimates that are quite similar to the reported estimates. The results are also almost identical if, for each year, a state’s share of all 14 year olds is used as the weight.

²⁴ We also find (consistent with Goldin and Katz 1999, 2003) a substantial and positive effect of auto registrations per capita and significant impacts of the state’s age structure at the upper and lower ends.

Thus, following Acemoglu and Angrist (2000), we define a more accurate measure of the mandated number of school years as follows:

$$\text{Child Labor School Years}_{st} = \max \{ (\text{education required for work permit}_{st}), \\ (\text{work permit age}_{st} - \text{school entrance age}_{s,t-8}) \}.$$

A read and write requirement for a work permit is coded as the equivalent as a requirement of 4 years of completed schooling.²⁵ The estimates in column (2) of Table 2 include this more accurate variable for measuring the constraints on schooling of child labor laws. The impacts of both the continuation law indicator variable and the child labor law measure, however, are quite similar to those in column (1). The coefficient on the variable for child labor school years measures the (intensive) effect on the high school enrollment rate of a one-year increase in mandated schooling. The significant positive coefficients on dummy variables for no child labor law and no compulsory schooling law indicate the (extensive) effect of introducing a law is smaller than the implied effect from intensive margin changes in the laws.

We next look at the discrete effects of child labor law requirements that are stringent enough that they could impact high school enrollment decisions. We focus on state child labor law provisions requiring 8 or more years of schooling to get a work permit. In column (3), we divide the column (1) child labor law control variable (work permit age – school entry age) into dummies variables for 8 years and 9 or more years (fewer than 8 years is the omitted variable). We also include a dummy variable for a state requirement of 8 years to get a work permit, which was the maximum adopted over the period. The estimates in column (3) reveal rather substantial effects of work permit and school entry ages that implicitly mandate 8 or more years of schooling. The high school enrollment rate increases by 3.7 percentage points when 8 years is implicitly required and by 6.5 percentage points when 9 or 10 years is required.

The specification in column (4) includes a summary measure of the minimum number of school years required by the state’s compulsory schooling laws:

$$\text{Compulsory School Years}_{st} = \min \{ (\text{education for exemption}_{st}), \\ (\text{maximum age of compulsory schooling}_{st} - \text{entry age}_{s,t-8}) \}$$

In constructing this variable, we code an education exemption for read and write as one for 4 years of schooling. The mean of “compulsory school years” is 6.9 over the sample and ranges from 0 to 12. The estimates in column (4) show small but statistically significant effects of “compulsory school years” on high school enrollments with the same child labor and continuation school controls as in the core specification in column (2). A one-year increase in “compulsory school years” is associated with 0.45 percentage point rise in the high school enrollment rate as compared to a 0.78 percentage point rise from a one year increase in “child labor school years.”

The effect of the “compulsory school year” variable is not robust to controlling for state and census division (or region) trends. In column (5), we replace the census division trends with

²⁵ The inclusion of a separate dummy variable for a read and write requirement yields a small and statistically insignificant coefficient and does not detectably affect the other estimated effects.

a full set of state-specific linear time trends. The impact of the continuation law variable remains about the same and is robust to other controls. But the effect of “compulsory schooling years” is eliminated by the addition of state trends and the effect of “child labor school years” is much weakened.

In summary, changes in state child labor law and compulsory schooling laws appear to have had some impact on high school enrollment rates from 1910 to 1938. But the impacts are modest particularly relative to the rapid rise in secondary schooling rates during the era of the high school movement. Continuation school laws, possibly because they imposed costs on the employers of high school age youth, have the most consistently positive effects on enrollment rates. Other child labor law requirements had some impacts, especially those that required 8 or more years of schooling for a work permit since permit rules typically undermined compulsory schooling laws.

How large was the contribution of child labor and compulsory schooling laws to the 50.4 percentage point increase in the high school enrollment rate from 1910 to 1938? We take the coefficient from the specification in column (4) of Table 2, which has controls for continuation laws, child labor laws, and compulsory schooling laws, to predict the effects of the laws on high school enrollment rates using the change in the mean of the law variables from 1910 to 1938. There was a 60 percentage point increase in the share of students in states with continuation school laws and that can explain just a 1.5 percentage point increase in the high school enrollment rate. The combined effects of changes in child labor and compulsory schooling laws (both the years and existence of the laws) add 1.8 percentage points. About a 3.3 percentage points or 5 to 6 percent of the overall increase in the high school enrollment rate from 1910 to 1938 is accounted for by changes in child labor and compulsory schooling laws. In contrast, the estimates in column (4) imply that the crude proxy from improved economic status represented by the increase in automobiles per capita from under .01 in 1910 to .22 in 1938 can explain a 19 percentage point rise in the high school enrollment rate.

Effects of law changes using census data on educational attainment

We next examine the effects of state compulsory schooling and child labor laws on the ultimate educational attainment of the birth cohorts who were of high school age during the high school movement era. We focus on the 1896 to 1925 birth cohorts, who reached high school entry age (14 years of age) between 1910 and 1939. Overall educational attainment increased rapidly for the cohorts affected by the high school movement in the first half of the twentieth century. Estimates from the 1960 Census for the U.S. born indicate a sharp rise of 2.45 in mean years of schooling from 8.59 years, for the birth cohort of 1896, to 11.04 years, for the birth cohort of 1925. Increases in years of high school (grades 9 to 12) account for the majority (1.42 years or 58 percent) of the rise in schooling over this time period.

Our empirical approach is to link our data on state laws and other state-level covariates to individual level data on educational attainment, state of birth, and individual demographics (race, sex, and parent’s nativity) for the U.S. born in the birth cohorts of 1896 to 1925 from the 1960 Census of Population IPUMS. We match each individual to the state child labor and compulsory schooling requirement that prevailed in their state of birth at the relevant ages. Thus, we use the

school entrance age law existing in their state of birth when they were 7 years old and the other components of the laws prevailing when they were 14 years old.

The Census micro data allow us to estimate the impact of the laws on the long-run educational attainment outcomes of the affected cohorts although there are some disadvantages. We only have information on each individual's state of birth and not on their state of residence when they were of school age. Interstate migration (about 14 percent of 14 year olds in 1920 were living in state different from their state of birth) can lead to modest attenuation bias from standard measurement error, but it could also generate more subtle biases from non-random migration from states with different patterns of law changes. We cannot measure the effects of the laws on foreign-born children who were about 5 percent of high school age youth in 1920.²⁶ We focus our analysis on the 1960 Census because it contains large samples for all the relevant cohorts with a consistent measure of years of schooling.²⁷

Our basic regression specifications for analyzing the effects of state laws on years of schooling are:

$$E_{ics} = X_{ics}\beta + L_{cs}\delta + Z_{cs}\pi + \alpha_s + \gamma_c + \mu_{ics} ,$$

where E_{ics} is the years of completed schooling of individual i from birth cohort c and state-of-birth s , X_{ics} are individual level demographic controls (race and sex dummies and an indicator variable for foreign born parents), L_{cs} is the vector of state child labor and compulsory schooling law variables affecting those born in state s from cohort c , Z_{cs} are time-varying state covariates, α_s are state fixed effects, and γ_c are birth cohort fixed effects. We also include controls for census division linear time trends (or for census region-year fixed effects). The state law variables are the same as those from our core specification for high school enrollment rates from column (4) of Table 2. We give robust standard errors clustered by state of birth to account for any state-level serial correlation in the residuals.

The key results on educational attainment for the entire sample and for various sub-samples (whites versus blacks, males versus females) are presented in Table 3. The core specification for the full sample is shown in column (1). The state law variables have modest but statistically significant effects on educational attainment. The introduction of a continuation school law is associated with a 0.13-year increase in schooling for the affected cohorts. Similar

²⁶ Estimates of the interstate migration rates of families with youth and of the share foreign born of 14 to 17 years olds in 1920 are from the 1920 Census IPUMS.

²⁷ We have also performed a similar analysis for the educational attainment of the same birth cohorts measured at similar ages (from 40 to 49 years of age) using data from the 1940, 1950, 1960, and 1970 Censuses. The results are similar but less precisely estimated than the estimates using the 1960 Census. The disadvantage of this approach is smaller sample sizes for the earlier cohorts since the 1940 Census only provides information on parents' nativity (a key control variable) for sample-line individuals and the 1950 Census only provides educational attainment information for sample-line individuals. There are also some differences in the measures of educational attainment available in the different Census years. The educational variable in the 1940 Census does not distinguish whether the highest grade attended was actually completed, and the 1940 and 1950 Census educational attainment data are top coded at 17 years as opposed to 18 years in the 1960 Census.

to our findings for contemporaneous high school enrollment rates, we estimate larger effects of child labor school years than for compulsory schooling law years. State manufacturing employment tends to have a depressing effect on educational attainment possibly reflecting higher opportunity costs of schooling because of youth employment in manufacturing.²⁸ In unreported regressions, we have also decomposed the effects of the laws in years of schooling into the effects of years in high school and other years of schooling. The introduction of a continuation school law increases completed high school by 0.06 years (almost half of the overall effect) and virtually all of the small estimated effect of compulsory schooling years arises from increasing years of high school. In contrast, we find that only one-fourth of the effect of child labor school years comes from affecting years in high school.

Our qualitative findings with respect to the effects of state laws on educational attainment are similar to Lleras-Muney (2002). But we estimate somewhat larger effects of continuation school laws and compulsory schooling year and modestly smaller effects of years of child labor law years.²⁹ The estimates in column (2) show slightly larger effects of child labor school years and slightly smaller effects of continuation school laws when controls for linear time trends for the nine Census divisions are replaced with a full set of region \times cohort fixed effects for the four Census regions.

The estimates in columns (3) to (6) of Table 2 show statistically significant and rather similar effects of continuation school laws on educational attainment of whites and blacks and males and females. The other aspects of child labor and compulsory schooling laws do not have significant effects on black, although the estimates for blacks are quite imprecise. As would be expected given differences in labor force opportunities, the effects of continuation laws are larger for males than females but the effects of compulsory schooling laws are estimated be large for females. The negative effects of manufacturing employment on educational attainment are more substantial for blacks than whites and for males than females.

The central message from the estimates in Table 3 is that state compulsory schooling and child labor laws appear to have played only minor roles in the large expansion of educational attainment for youths from 1910 to 1939 (of the birth cohorts of 1896 to 1925). For youths born in 1896, 9 percent lived in states with continuation school laws, 33 percent faced no compulsory schooling law at age 7, 14 percent had no child labor law, and the mean years of schooling from child labor laws and compulsory schooling laws were 4.6 and 4.9 years respectively. In contrast, for youths born in 1925, 69 percent lived in states with continuation school laws, all states had child labor law and compulsory schooling law restrictions, and the mean years of binding

²⁸ Also, the “automobiles per capita” variable that has large effects on contemporaneous high school enrollment rates has small and statistically insignificant effects on overall years of schooling. But we do find (in unreported regressions) that the automobiles per capita variable has large and statistically significant positive effects on years of high school and the probability of completing 9 or more years for the same sample.

²⁹ The differences from Lleras-Muney (2002) arise from expanding the sample to cover earlier cohorts (those born 1896 to 1900), “improvements” in the coding of and specification of the effects of state laws, differences in treatment of regional trends, and some tiny data entry errors in control variables. An Appendix (forthcoming) replicates the exact sample and core estimates of Lleras-Muney (2002) and shows the sources of differences in the estimated effects of the laws.

schooling requirements from child labor and compulsory schooling laws had both risen to 8.0 years.

Our core estimates in column (1) of Table 3 imply that these changes in state laws can explain an increase in educational attainment of 0.13 years with 0.08 years coming from the adoption of continuation laws and 0.05 years coming from the strengthening of other child labor and compulsory schooling law requirements. Thus, about 5 percent of the 2.45-year increase in schooling from the 1896 to 1925 birth cohorts can be attributed to changes in child labor and compulsory schooling laws. The estimated proportional contribution of these laws to the growth of overall educational attainment is almost identical to our estimates of their contemporaneous effects on the high school enrollments of these same cohorts.

Conclusions

The secondary school enrollment rate of U.S. youth expanded enormously (by over 50 percentage points) during the “high school movement” period of 1910 to 1940. Changes in child labor laws and compulsory schooling laws motivated by Progressive Era campaigns to reduce child labor, moderate youth idleness and delinquency, and expand schooling have been credited by many observers as playing a major role in the rapid rise of U.S. secondary schooling of the first half of the twentieth century. This paper finds that changes in child labor and compulsory schooling laws had statistically detectable but relatively modest effects on U.S. secondary schooling rates. Continuation school requirements that may have affected the attractiveness of youth to employers had somewhat larger effects on schooling than did other components of child labor and compulsory schooling laws. Our estimates imply that increases in the restrictiveness of state continuation school, child labor, and compulsory schooling laws can account for only around 5 percent of the increase in secondary school enrollments and ultimate educational attainment of U.S youth from 1910 to 1939.

Compulsory schooling laws were expanded and increasingly enforced in many countries in the mid-twentieth century. Such laws were apparently effective in countries such as Great Britain where they were accompanied by large increases in educational access and spending. But in the United States, schools (even secondary schools) were already largely available and free for most students who could have been affected by compulsory schooling laws. The enormous expansion of U.S. secondary school enrollment was due largely to factors such as the substantial pecuniary returns to a year of school, increased family wealth, and greater school access. The constraints imposed on youth, employers, and local government by child labor and compulsory schooling laws were far less important.

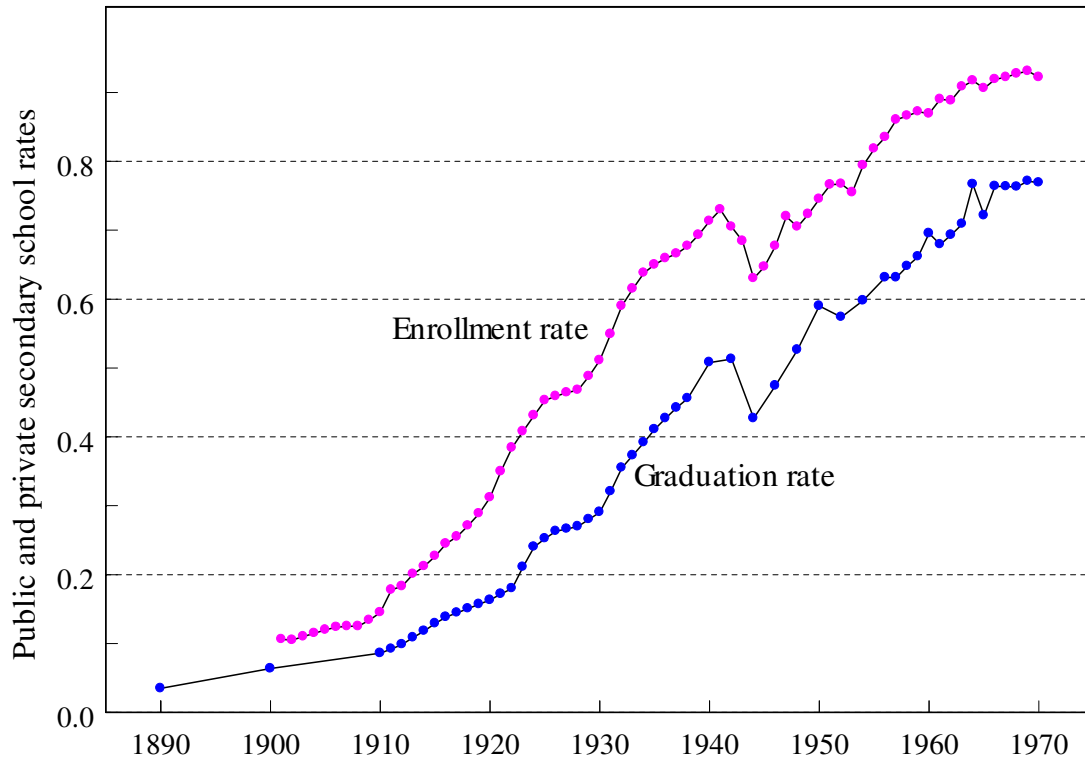
References

- Acemoglu, Daron, and Joshua Angrist. 2000. "How Large Are Human Capital Externalities? Evidence from Compulsory Schooling Laws," *NBER Macroeconomics Annual 2000* 15: 9-59.
- Angrist, Joshua D., and Krueger, Alan B. 1991. "Does Compulsory School Attendance Affect Schooling and Earnings?" *Quarterly Journal of Economics* 106 (November): 979-1014.
- Bermejo, F. V. 1923. *The School Attendance Service in American Cities*. Menasha, WI: George Banta Publishing Co.
- Bertrand, Marianne, Esther Duflo, and Sendhil Mullainathan. 2002. "How Much Should We Trust Differences in Differences Estimates?" NBER Working Paper no. 8841 (March).
- Clapp, Mary A., and Mabel A. Strong. 1928. *The School and the Working Child: A Study of ...Fifty School Departments of Massachusetts*. Boston, MA: Massachusetts Child Labor Committee.
- Edwards, Linda Nasif. 1978. "An Empirical Analysis of Compulsory Schooling Legislation, 1940-1960," *Journal of Law and Economics* 21 (April): 203-22.
- Eisenberg, Martin J. 1988. "Compulsory Attendance Legislation in America, 1870 to 1915." Ph.D. dissertation. Department of Economics, University of Pennsylvania.
- Emmons, Frederick Earle. 1926. *City School Attendance Service*. Teachers College, Columbia University Contributions to Education, no. 200. New York: Teachers College, Columbia University.
- Gibbons, Charles E. 1927. *School or Work in Indiana?* New York: National Child Labor Committee.
- Goldin, Claudia. 1994. "Appendix to: How America Graduated from High School: An Exploratory Study, 1910 to 1960." NBER-Historical Working Paper, No. 57 (June).
- Goldin, Claudia. 1998. "America's Graduation from High School: The Evolution and Spread of Secondary Schooling in the Twentieth Century," *Journal of Economic History* 58 (June): 345-74.
- Goldin, Claudia, and Lawrence F. Katz. 1999. "Human Capital and Social Capital: The Rise of Secondary Schooling in America, 1910 to 1940," *Journal of Interdisciplinary History* XXIX (Spring): 683-723.

- Goldin, Claudia, and Lawrence F. Katz. 2003, forthcoming. "Why the United States Led in Education: Lessons from Secondary School Expansion, 1910 to 1940." In D. Eltis, F. Lewis, and K. Sokoloff, eds., *Factor Endowments, Labor and Economic Growth in the Americas*. New York: Cambridge University Press.
- Kézdi, Gábor. 2001. "Robust Standard Error Estimation in Fixed-Effects Panel Models." Unpublished paper, University of Michigan, July.
- Landes, William M., and Lewis C. Solmon. 1972. "Compulsory Schooling Legislation: An Economic Analysis of Law and Social Change in the Nineteenth Century," *Journal of Economic History* 32 (March): 54-91.
- Lleras-Muney, Adriana. 2002. "Were Compulsory Attendance and Child Labor Laws Effective? An Analysis from 1915 to 1939," *Journal of Law and Economics* 45 (October): 401-35.
- Margo, Robert A., and T. Aldrich Finegan. 1996. "Compulsory Schooling Legislation and School Attendance in Turn-of-the-Century America: A 'Natural Experiment' Approach," *Economics Letters* 53 (October): 103-10.
- Organization for Economic Cooperation and Development (OECD). 1998. *Education at a Glance: OECD Indicators, 1998*. Paris: OECD Press.
- Oreopoulos, Philip. 2003. "Do Dropouts Drop Out Too Soon? Evidence from Changes in School-Leaving Laws." Unpublished paper, University of Toronto, January.
- Ringer, Fritz K. 1979. *Education and Society in Modern Europe*. Bloomington, IN: Indiana University Press.
- Schmidt, Stefanie. 1996. "School Quality, Compulsory Education laws, and the Growth of American High School Attendance, 1915-1935." Ph.D. dissertation. Department of Economics, M.I.T.
- Stambler, Moses. 1968. "The Effect of Compulsory Education and Child Labor Laws on High School Attendance in New York City, 1898-1917," *History of Education Quarterly* 2 (Summer): 189-214.
- Steinhilber, August W. and Carl J. Sokolowski. 1966. *State Law on Compulsory Attendance*. U.S. Department of Health, Education, and Welfare, Circular no. 793. Washington, D.C.: GPO.
- Troen, Selwyn K. 1975. *The Public and the Schools: Shaping the St. Louis System, 1838-1920*. Columbia, MO: University of Missouri Press.
- Tyack, David B. 1974. *The One Best System: A History of American Urban Education*. Cambridge MA: Harvard University Press.

U.S. Department of Education. 1993. *120 Years of American Education: A Statistical Portrait*. Washington, D.C.: GPO.

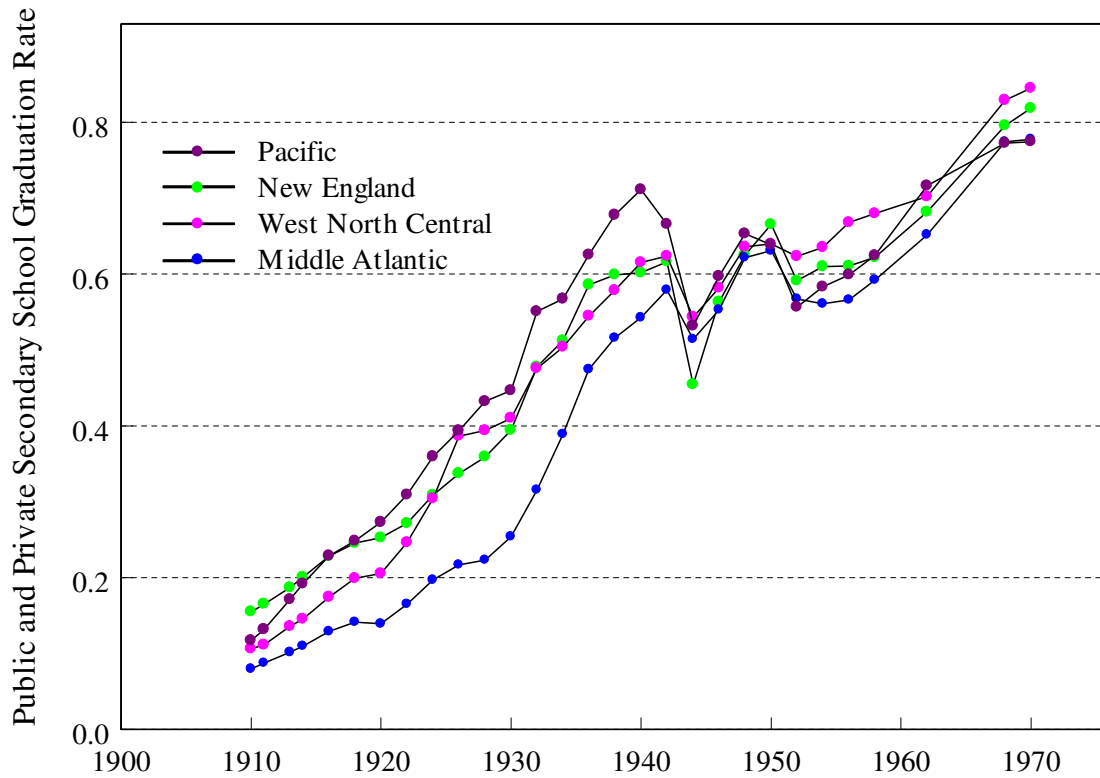
Figure 1
Public and Private Secondary School Enrollment and Graduation Rates, 1890 to 1970



Source: U.S. Department of Education (1993) and Goldin (1994, 1998) for graduation rates from 1910 to 1930.

Notes: Enrollment figures are divided by the number of 14 to 17 year olds; graduation figures are divided by the number of 17 year olds. Data include males and females in public and private schools (excluding preparatory departments of colleges and universities). Year given is end of school year.

Figure 2
Public and Private High School Graduation Rates for Four Regions, 1910 to 1970

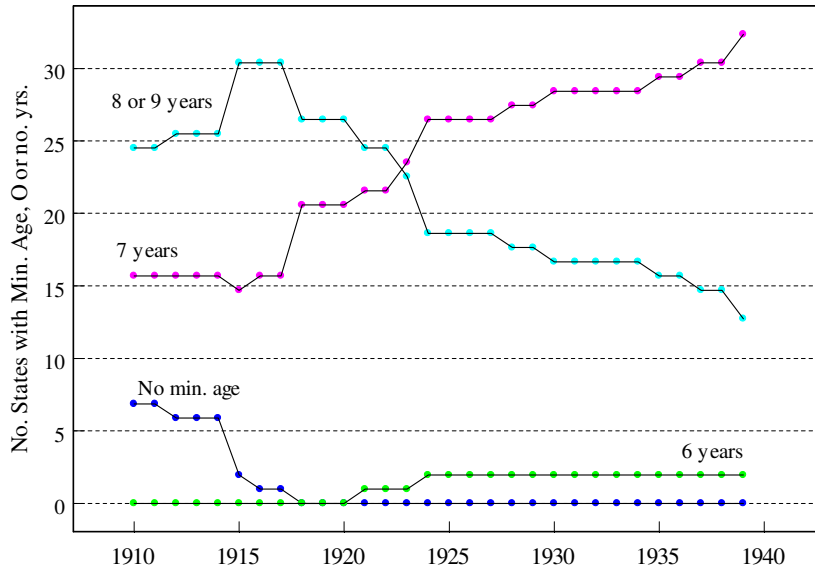


Sources: State-level high school graduation data set from various sources; see Goldin (1994, 1998).

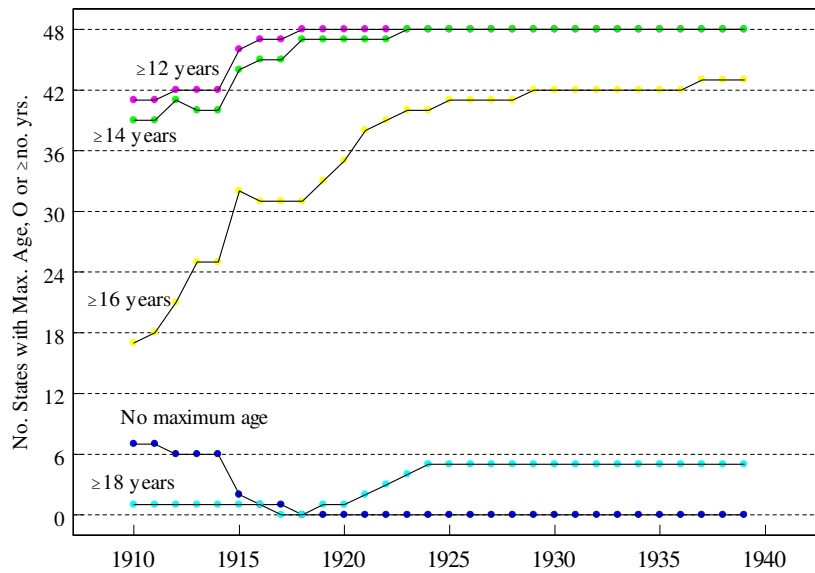
Notes: Includes males and females in public and private schools (including preparatory departments of colleges and universities). The number of graduates is divided by the approximate number of 17 year olds in the state. Constant growth rate interpolations of population data are made between decennial census years.

Figure 3
Aspects of Compulsory Schooling and Child Labor Laws: 1910 to 1939

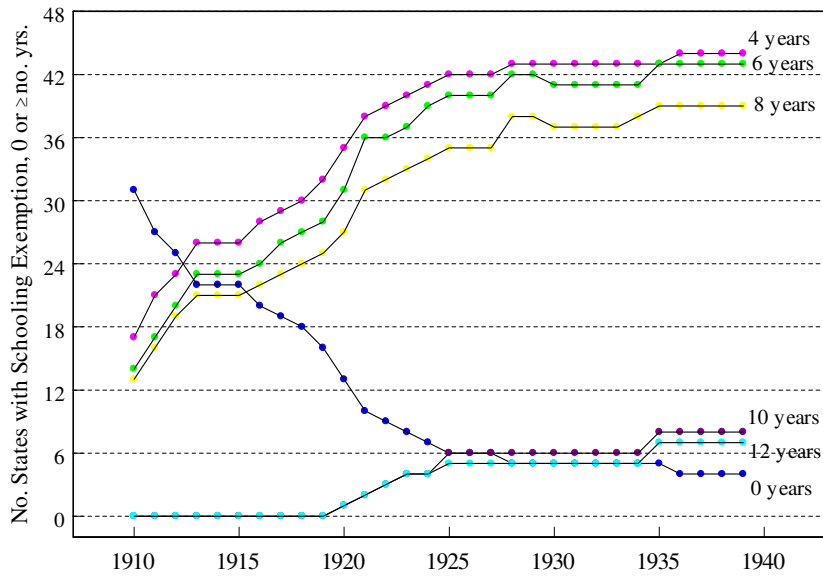
1. Minimum age of compulsory schooling (0 or number of years)



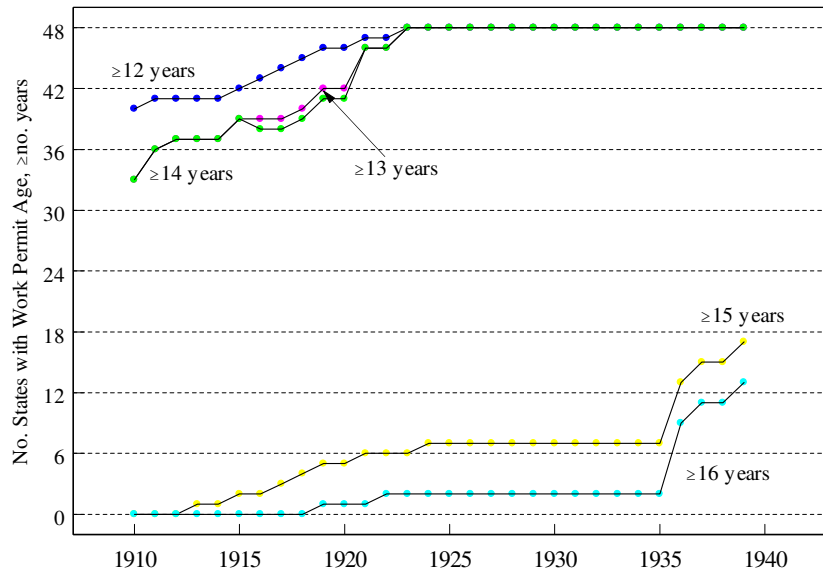
2. Maximum age of compulsory schooling (0 or greater than or equal to given number of years)



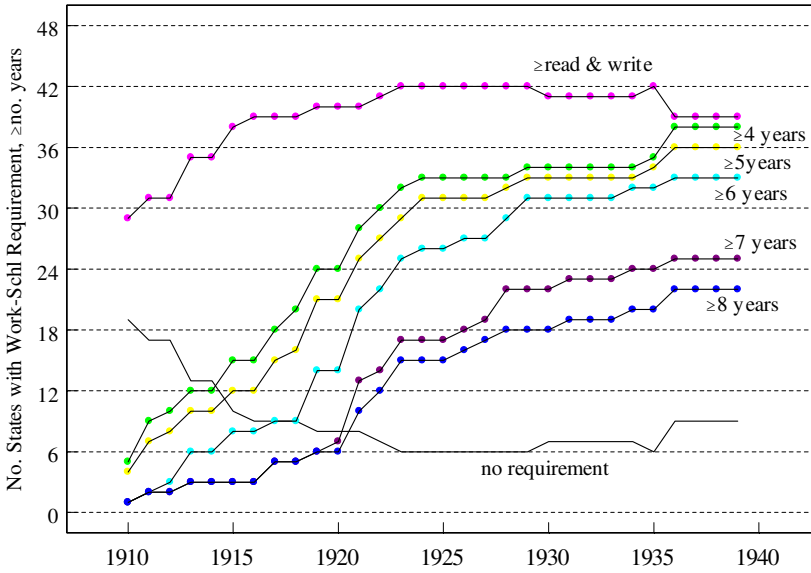
3. Education for exemption from maximum age rule (greater than or equal to given number of years)



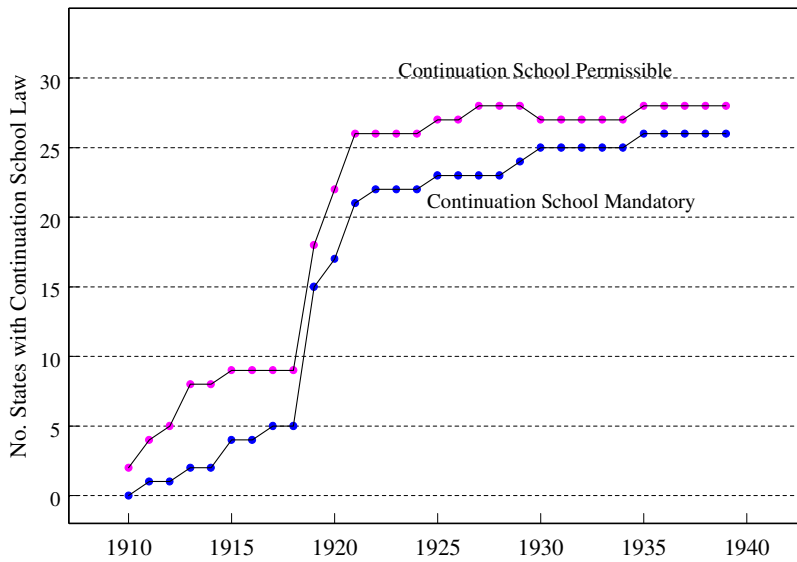
4. Work permit age (greater than or equal to given number of years)



5. Education required to obtain a work permit (none or greater than or equal to years given)



6. & 7. Continuation School Mandatory or Permissible



Sources: See Data Appendix.

Table 1
 School Attendance by Age for White Youths,
 by State Compulsory Schooling and Child Labor Law Ages: 1910 and 1920

A. Minimum Compulsory Schooling Age

Child's Age	Minimum Age, 1910				Minimum Age, 1920		
	None	7	8	9	7	8	9
6	0.334	0.675	0.523	0.417	0.738	0.624	0.644
7	0.611	0.844	0.775	0.741	0.886	0.847	0.867
8	0.747	0.902	0.865	0.886	0.921	0.904	0.974
9	0.819	0.925	0.897	0.976	0.941	0.926	0.948
# states	7	16	24	1	21	26	1

B. Work Permit Age

Youth's Age	Work Permit Age, 1910			Work Permit Age, 1920					
	None	12	14	None	12	13	14	15	16
Full-Time or Part-Time School Attendance									
11	0.894	0.925	0.958	0.932	0.904	0.986	0.965	0.976	0.915
12	0.847	0.901	0.943	0.929	0.902	0.964	0.961	0.973	0.893
13	0.854	0.893	0.934	0.946	0.877	0.925	0.953	0.972	0.912
14	0.803	0.828	0.868	0.846	0.843	0.820	0.883	0.938	0.882
15	0.723	0.704	0.721	0.793	0.736	0.611	0.739	0.806	0.778
16	0.617	0.568	0.517	0.586	0.588	0.329	0.506	0.526	0.646
17	0.454	0.384	0.354	0.476	0.441	0.263	0.345	0.358	0.445
Full-Time School Attendance									
11	0.661	0.825	0.923	0.932	0.841	0.973	0.950	0.969	0.870
12	0.606	0.789	0.900	0.912	0.810	0.959	0.938	0.959	0.843
13	0.583	0.713	0.874	0.913	0.782	0.890	0.921	0.953	0.830
14	0.494	0.637	0.759	0.838	0.727	0.775	0.825	0.912	0.792
15	0.467	0.504	0.589	0.724	0.620	0.578	0.671	0.760	0.677
16	0.360	0.354	0.400	0.560	0.482	0.276	0.433	0.467	0.550
17	0.280	0.249	0.263	0.427	0.352	0.220	0.287	0.315	0.370
# states	8	7	33	2	4	1	36	4	1

Sources: See Data Appendix for sources on compulsory schooling and child labor laws. School enrollment data are from the IPUMS of the U.S. federal population census for 1910 and 1920.

Notes: "School attendance" in the U.S. censuses of 1910 and 1920 means that the youth had been in a school for at least one day during the previous year. Respondents could list an occupation in addition to school attendance. We define "full-time school attendance" as attendance but no occupation. "Full-time and part-time school attendance" means that the youth was listed as attending school but also could have an occupation. Youths who listed an occupation and stated that they had attended school during the year could have worked during the summer, school vacation, or after school hours. But they also could be youths who dropped out of school to work during the year or worked and attended school on a limited basis.

Table 2
Impact of State Compulsory Schooling and Child Labor Laws
on Secondary School Enrollment Rates, 1910 to 1938 (Biennially, 48 States)

Dependent variable: Fraction of state's 14 to 17 year olds enrolled in public and private secondary schools (mean = 0.441)					
	(1)	(2)	(3)	(4)	(5)
Continuation school law	0.0210 (0.00874)	0.0252 (0.00936)	0.0245 (0.00846)	0.0249 (0.00940)	0.0244 (0.0112)
(Work permit age _t) – (school entrance age _{t-8})	0.0128 (0.00397)				
(Work permit age _t) – (school entrance age _{t-8}) = 8			0.0371 (0.00920)		
(Work permit age _t) – (school entrance age _{t-8}) ≥ 9			0.0649 (0.0165)		
Child labor school years ^a		0.00889 (0.00246)		0.00777 (0.00265)	0.00437 (0.00347)
No child labor law	0.0111 (0.0158)	0.0247 (0.0138)		0.0217 (0.0185)	-0.00339 (0.0291)
No compulsory schooling law	0.0816 (0.0239)	0.0307 (0.0137)		0.0563 (0.0167)	0.00979 (0.0249)
Compulsory school years ^b				0.00453 (0.00209)	0.000239 (0.00297)
Education required for work permit = 8			0.00139 (0.0101)		
Autos per capita	0.879 (0.183)	0.921 (0.210)	0.816 (0.173)	0.865 (0.187)	0.995 (0.277)
Manufacturing employment per capita	-0.0414 (0.401)	-0.0230 (0.400)	-0.108 (0.403)	0.134 (0.409)	-0.0223 (0.463)
Fraction ≥ 65 years	2.91 (1.43)	2.76 (1.46)	2.93 (1.35)	3.06 (1.39)	3.58 (2.66)
Fraction ≤ 14 years	-1.97 (0.569)	-1.97 (0.595)	-1.85 (0.496)	-2.10 (0.583)	-2.04 (0.917)
Other state demographic controls ^c	yes	yes	yes	yes	yes
State dummies	yes	yes	yes	yes	yes
Year dummies	yes	yes	yes	yes	yes
Census division trends	yes	yes	yes	yes	no
State trends	no	no	no	no	yes
R ²	0.978	0.978	0.979	0.978	0.984
Standard error	0.0320	0.0322	0.0313	0.0321	0.0286
Number of observations	720	720	720	720	720

^a Child labor school years_t = $\max\{(\text{education required for work permit}_t), (\text{work permit age}_t - \text{school entrance age}_{t-8})\}$

^b Compulsory school years_t = $\min\{(\text{education for exemption}_t), (\text{maximum age of compulsory schooling}_t - \text{entry age}_{t-8})\}$

^c Includes fraction black, fraction foreign born, fraction urban.

Sources: Secondary school enrollments, see Goldin (1994, 1998); compulsory school and child labor laws, see Data Appendix; data on percent black, percent foreign born, and percent urban were provided by Adriana Lleras-Muney and are from the 1910, 1920, 1930, and 1940 Censuses of Population (linearly imputed in intervening years); other variables, see Goldin and Katz (2003, forthcoming).

Notes: All regressions have been weighted by the number of 14 year olds in the state. The numbers in parentheses are robust standard errors clustered by state. The 1912 enrollment rate is the average of that in 1911 and 1913.

Table 3
The Impact of State Compulsory Schooling and Child Labor Laws on Educational Attainment,
1896 to 1925 U.S. Born Cohorts

Dependent variable = Completed Years of Schooling (Mean = 10.01)						
	(1)	(2)	(3)	(4)	(5)	(6)
	All	All	Whites	Blacks	Males	Females
Continuation school law	0.133 (0.0462)	0.0780 (0.0398)	0.124 (0.0505)	0.189 (0.0974)	0.151 (0.055)	0.115 (0.0468)
Child labor school years ^a	0.0296 (0.0140)	0.0385 (0.0139)	0.0304 (0.0160)	0.00295 (0.0182)	0.0223 (0.0147)	0.0378 (0.0165)
Compulsory school years ^b	0.0136 (0.00781)	0.0104 (0.0108)	0.0109 (0.00685)	0.00244 (0.0203)	0.0104 (0.0113)	0.0157 (0.0103)
No child labor law	0.156 (0.146)	0.220 (0.136)	0.146 (0.168)	0.153 (0.160)	0.0972 (0.135)	0.210 (0.165)
No compulsory schooling law	0.198 (0.0852)	0.218 (0.0742)	0.207 (0.0860)	0.0221 (0.163)	0.254 (0.0958)	0.139 (0.0991)
Autos per capita	0.363 (0.728)	-1.43 (0.850)	0.394 (0.689)	1.86 (2.25)	0.136 (0.805)	0.601 (0.789)
Manufacturing employment per capita	-3.23 (1.55)	-2.26 (2.33)	-2.38 (1.50)	-6.25 (2.79)	-5.28 (1.79)	-1.23 (1.62)
State demographic controls	Yes	Yes	Yes	Yes	Yes	Yes
Person demographic controls	Yes	Yes	Yes	Yes	Yes	Yes
State of birth dummies	Yes	Yes	Yes	Yes	Yes	Yes
Birth cohort dummies	Yes	Yes	Yes	Yes	Yes	Yes
Census division trends	Yes	No	Yes	Yes	Yes	Yes
Census region*cohort effects	No	Yes	No	No	No	No
R ²	0.160	0.160	0.099	0.160	0.172	0.152
Standard error	3.19	3.19	3.14	3.53	3.36	3.01
No. of observations	536,628	536,628	483,993	50,912	260,884	275,744

^a Child labor school years_t = max{(education required for work permit_t), (work permit age_t – school entrance age_{t-7})}, where t is the year at which the individual is 14 years old

^b Compulsory school years_t = min{(education for exemption_t), (maximum age of compulsory schooling_t – entry age_{t-7})}, where t is the year at which the individual is 14 years old

Sources: IPUMS of the 1960 federal population census. See Data Appendix for state compulsory schooling and child labor laws. The sources of the other variables are given in the notes to Table 2.

Notes: State demographic controls are fractions foreign born, black, urban, greater than 64 years old, and less than 15 years old. Individual demographic controls include dummy variables for female, black, other race, and parents foreign-born. Robust standard errors are in parentheses clustered by state of birth. The school entrance law refers to that in existence in the individual's state of birth at age 7, whereas all other law variables are for age 14.

Data Appendix to “Mass Secondary Schooling and the State:
The Role of State Compulsion in the High School Movement”
Claudia Goldin and Lawrence F. Katz

Construction of State-Level Compulsory Education and Child Labor Laws, 1910 to 1939

The compilation of state-level compulsory education and child labor laws, from 1910 to 1939, contains the following seven variables:

1. Minimum age of compulsory schooling, know as the school entrance age (also compiled for 1902 to 1909);
2. Maximum age of compulsory schooling (also compiled for 1902 to 1909);
3. Education for exemption from maximum age rule;
4. Age at which youth can obtain a work permit (for work during normal school hours);
5. Education required to receive a work permit (for work during normal school hours);
6. Whether state has mandatory continuation schools; and
7. Maximum age of continuation school attendance (state permits municipalities to establish continuation schools).

These are summary variables of complex laws. The first 3 variables concern compulsory education laws and the last 4 are child labor laws. Compulsory education and child labor laws were often two sides of the same coin. They have appeared to latter-day observers to have been inconsistent because the maximum age of compulsory education was often higher than the age at which a work permit could be obtained. But the laws were generally part of the same piece of legislation and had a set of similar goals.

The binding constraint for much of the period we consider was the age at which a youth could obtain a work permit or the education required to receive a work permit. Take, for example, a state with a maximum age of compulsory education of 16 years, but in which a youth of 14 can receive a work permit for work during normal school hours if the youth had already completed 8 years of school. In that case, the binding constraint would be, most likely, the age needed for the work permit. But if the education required were no more than being able to “read and write,” the binding constraint would be the education required to get a work permit. Many states also had a minimum education level to excuse a youth from the maximum age of compulsory education. In certain states and at certain times, this would have been the binding constraint.

Finally, many states adopted laws requiring school districts to establish “continuation schools.” The continuation school idea caught on after World War I, although it was first adopted in 1911 by Wisconsin. A mandatory state continuation school law (variable 6) meant that school districts, with a large enough number of working youths under some age, had to establish a continuation school. Youths who did not meet a minimum education standard were required to attend the school for some number of hours per week (for example, one afternoon of

four hours) and the employers were often responsible to excuse the youths from work during their school time. Many states, however, did not have a mandatory law but, rather, had a law setting the maximum age for youths to be in such a school if one existed. That is, variable (6) would be 0 but variable (7) would be some age. If a municipality had a continuation school, the maximum age given in the state law would be binding.

The compulsory education and child labor laws contain numerous complexities that make their coding difficult. Most states, for example, had several exemptions for compulsory education and a detailed knowledge of court decisions is required to assess their importance. For example, “mental defectives” were almost always exempt from compulsory education laws. Similarly, children of impoverished families were often exempt from the education requirement for a work permit. The definition of “defective” and “impoverished” was up to the courts. There is also the difficult issue of enforcement.

Another complexity is that state laws occasionally had different ages for cities and towns than for the rest of the state or for the largest city versus all other places. Our coding used that for the majority of the population. In other cases, the state left the details of compulsory education laws to the school districts and municipalities. Finally, these seven variables omit the details concerning child labor laws, such as the number of hours they could labor and the occupations that were banned for youths of various ages and by sex.

The data on these laws are primarily derived from 12 contemporaneous compilations (see References) most often commissioned by the U.S. Office of Education or the Children’s Bureau of the U.S. Department of Labor. When a law changed between two of the compilations, the actual state laws were consulted to find the precise date of change or, when available, information on changes to state laws published by the Office of Education. In some cases we could not locate the precise date of change. In such cases, the law is generally extrapolated back in time (e.g., if a law changes between 1921 and 1924, the 1924 details are assigned to 1922 and 1923). Because we have major compilations for 1910, 1914, 1915, 1917/18, 1921, 1924, 1927, 1928, 1929, 1935, 1939, and 1945, as well as minor compilations for several other dates, the change dates that we have imputed are probably not too different from the actual ones.

The interpretation of the state laws was often difficult and some compilations were clearly wrong in some of the details. In certain cases, the state laws are difficult to code because they did not apply in uniform ways throughout the state. For example, in some cases the law applied to just the largest city (e.g., Wilmington DE, New Orleans LA, Baltimore MD). In these cases, we have coded the state law rather than that of the city because the majority of the state’s population did not live in the largest city. But when the law applied to all cities and town (say above 2,500 population) we have coded the city laws rather than those applying to only rural areas in the state. In some cases, there was no state law and localities were given discretion to write their own law. In these cases, we coded the state as not having a law. In a few instances the law applied differently to boys than to girls and we have used the restrictions that applied to the former.

The data set is the result of many individual labors. It was begun independently by Claudia Goldin (in 1993) and by Adriana Lleras-Muney (in her Ph.D. dissertation). Stefanie

Schmidt took Goldin's initial coding and added others. Stefanie Schmidt's work covered almost the same years that Lleras-Muney's did (1915 to 1935 for Schmidt and 1915 to 1939 for Lleras-Muney). Both used similar sources in most years, but there were some differences. Schmidt relied on state legal documents for the years between the compilations to pinpoint state law changes. Lleras-Muney used more published compilations than did Schmidt and thus encountered fewer changes that had uncertain dates.

We cross-checked these two compilations (and another by Angrist and Acemoglu, which also covers years after 1940 but contains less detail for the 1915 to 1940 period), checked them against the original documents used, and rectified the differences, as best we could. In addition we extended the Lleras-Muney and Schmidt series back to 1910.

Data Appendix References

Acemoglu, Daron, and Joshua Angrist. 2000. "How Large Are Human Capital Externalities? Evidence from Compulsory Schooling Laws," *NBER Macroeconomics Annual 2000* 15: 9-59.

Bender, John F. 1928. "Criticisms of Attendance Laws," *American School Board Journal* 76 (February): 43-44.

Bonner, H.R. 1923. "The Conviction of Legislators," *American School Board Journal* 66 (February): 45-48.

§ Deffenbaugh, Walter S., and Ward W. Keesecker. 1935. *Compulsory School Attendance Laws and their Administration*. U.S. Office of Education Bulletin, 1935, no. 4. Washington, D.C.: GPO.

Ensign, Forest Chester. 1969 [reprint of 1921 ed.]. *Compulsory Education Laws and Child Labor*. New York: Arno Press.

§ Keesecker, Ward W. 1929. *Laws Relating to Compulsory Education*. Bureau of Education Bulletin, 1928, no. 20. Washington, D.C.: GPO.

Lleras-Muney, Adriana. 2002. "Were Compulsory Attendance and Child Labor Laws Effective? An Analysis from 1915 to 1939," *Journal of Law and Economics* XLV (October): 401-35.

Merritt, Ella Arvilla. 1940. "Trends of Child Labor, 1937 to 1939," *Monthly Labor Review* (January).

National Child Labor Committee. 1927. *Twenty-Third Annual Report of the National Child Labor Committee for ... 1927*. New York: National Child Labor Committee.

§ National Child Labor Committee. 1928. *Child Labor Laws and Child Labor Facts: An Analysis by States* (November 1927). New York: National Child Labor Committee.

No author. 1937. "Child Labor: Compulsory School-Attendance Provisions Affecting Employment of Minors in the United States, 1936," *Monthly Labor Review* (February).

No author. 1938. "Labor Laws, State Labor Legislation, 1937," *Monthly Labor Review* (January).

Proffitt, Maris M. 1933. *Report on 206 Part-Time and Continuation Schools*. Office of Education Pamphlet no. 38. Washington, D.C.: GPO.

§ Proffitt, Maris M., and David Segel. 1945. *School Census, Compulsory Education, Child Labor: State Laws and Regulations*. U.S. Office of Education, Bulletin, 1945, no. 1. Washington, D.C.: GPO.

Schmidt, Stefanie. 1996. "School Quality, Compulsory Education Laws, and the Growth of American High School Attendance, 1915-35." MIT. Ph.D. Dissertation.

§ Segel, David, and Maris M. Proffitt. 1942. *Pupil Personnel Services as a Function of State Departments of Education*. U.S. Office of Education Bulletin, 1940 no. 6. Washington, D.C.: GPO.

§ Sumner, Helen L., and Ella A. Merritt. 1915. *Child Labor Legislation in the United States*. U.S. Department of Labor, Children's Bureau Publication no. 10. Washington, D.C.: GPO.

§ U.S. Department of Labor, Children's Bureau. 1921. *State Child-Labor Standards, January 1, 1921*. Chart series no. 1. Washington, D.C.: GPO.

§ U.S. Department of Labor, Children's Bureau. 1921. *State Compulsory School Attendance Standards Affecting the Employment of Minors, January 1, 1921*. Chart series no. 2. Washington, D.C.: GPO.

U.S. Department of Labor, Children's Bureau. 1923. *Standards and Problems Connected with the Issuance of Employment Certificates*. Bureau Publication no. 116. Washington, D.C.: GPO.

§ U.S. Department of Labor, Children's Bureau. 1924. *State Compulsory School Attendance Standards Affecting the Employment of Minors, September 15, 1924*. Chart series no. 1. Washington, D.C.: GPO.

§ U.S. Department of Labor, Children's Bureau. 1930. *Child Labor: Facts and Figures*. U.S. Department of Labor, Children's Bureau Publication no. 197. (October 1929) Washington, D.C.: GPO.

§ U.S. Department of Labor, Children's Bureau. 1935. *State Compulsory School Attendance Standards Affecting the Employment of Minors: State Child Labor Standards*. Washington, D.C.: GPO.

U.S. Department of Labor, Children's Bureau. 1938. *Child-Welfare Legislation, 1937*. Bureau Publication no. 236. Washington, D.C.: GPO.

U.S. Federal Board for Vocational Education. 1920 *Compulsory Part-Time School Attendance Laws*. Bulletin no. 55. Trade and Industrial Series no. 14. (August) Washington, D.C.: GPO.

§ U.S. Office [Bureau] of Education. 1910. *Education Report, 1910*. [Annual Report of the Commissioner of Education]. "Compulsory Education and Child-Labor Laws." Washington, D.C.: GPO.

Also *Education Report, 1920*

§ U.S. Office [Bureau] of Education. 1914. *Compulsory School Attendance*. Bulletin no. 2. Walter S. Deffenbaugh. Washington, D.C.: GPO.

U.S. Office [Bureau] of Education. 1925. *Important State Laws Relating to Education Enacted in 1922 and 1923*. Bulletin, 1925, no. 2. Compiled by William R. Hood. Washington, D.C.: GPO.

U.S. Office [Bureau] of Education. [various years] *Report of the Commissioner of Education for the Year Ended [year]*. [Annual Report] Washington, D.C.: GPO.
Various years including 1918.

U.S. Office [Bureau] of Education. [various years] *Biennial Survey of Education, [various years]*. Washington, D.C.: GPO.
§ 1916/18 (1917/18 compendium)
also 1920/22, 1922/24, 1928/30, 1930/32

State law documents including titles such as “School Codes of [State],” “Act of [State] Legislature,” “[State] Board of Education,” and “Biennial Reports of [State].”

§ denotes one of the major compilations of compulsory education and/or child labor laws.